

chris hamriding

lettings & estate agents



9 Hankelow Close, Middlewich, CW10 0RQ

Offers In The Region Of £320,000

Take a moment to view our guided tour of this impressive, extended family home!

Positioned on the pleasant cul-de-sac of Hankelow Close, being in a favoured part of Middlewich with well regarded schooling/nursery's on your doorstep and backing onto playing fields, this delightful detached house offers a perfect blend of comfort and modern living. The home has been cleverly extended to the rear, enhancing the accommodation and providing ample room for any upsizing family, with its well-designed flowing layout and spacious reception areas.

Accompanying the home are a number of features to note, some of which include:- double glazing throughout, a ground floor cloakroom, a spacious lounge with wood burning stove and split-face tiled surround, a generous breakfast kitchen complete with country-style shaker units, a wealth of storage, a range cooker and slate effect floor tiles. At the rear of the home, there is versatile reception space which is rear garden facing with patio doors opening onto the rear terrace.

Upstairs, there are four bedrooms, three comfortable double room with refitted en-suite bathroom to the master and a competent single room. The remaining three rooms are serviced by the family bathroom with white, four piece suite.

Accommodation

Entrance Hall

Cloakroom 4'1" x 2'11" (1.26 x 0.91)

Lounge 14'7" x 10'11" (4.45 x 3.35)

Dining Room 10'11" x 9'0" (3.35 x 2.75)

Kitchen 16'11" x 9'10" (5.17 x 3.00)

First floor Landing

Bedroom One 13'1" x 10'7" (4.00 x 3.24)

En-suite 8'4" x 7'11" (2.56 x 2.42)

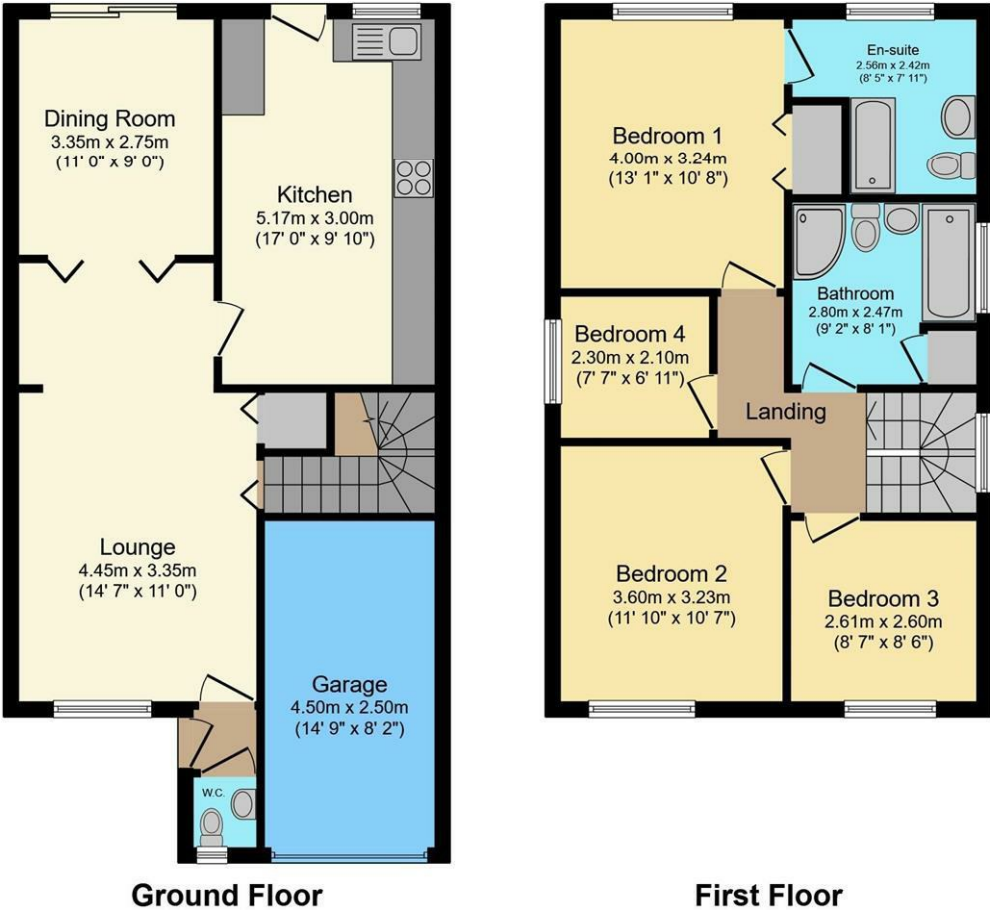
Bedroom Two 11'9" x 10'7" (3.60 x 3.23)

Bedroom Three 8'6" x 8'6" (2.61 x 2.60)

Bedroom Four 7'6" x 6'10" (2.30 x 2.10)

Family Bathroom 9'2" x 8'1" (2.80 x 2.47)

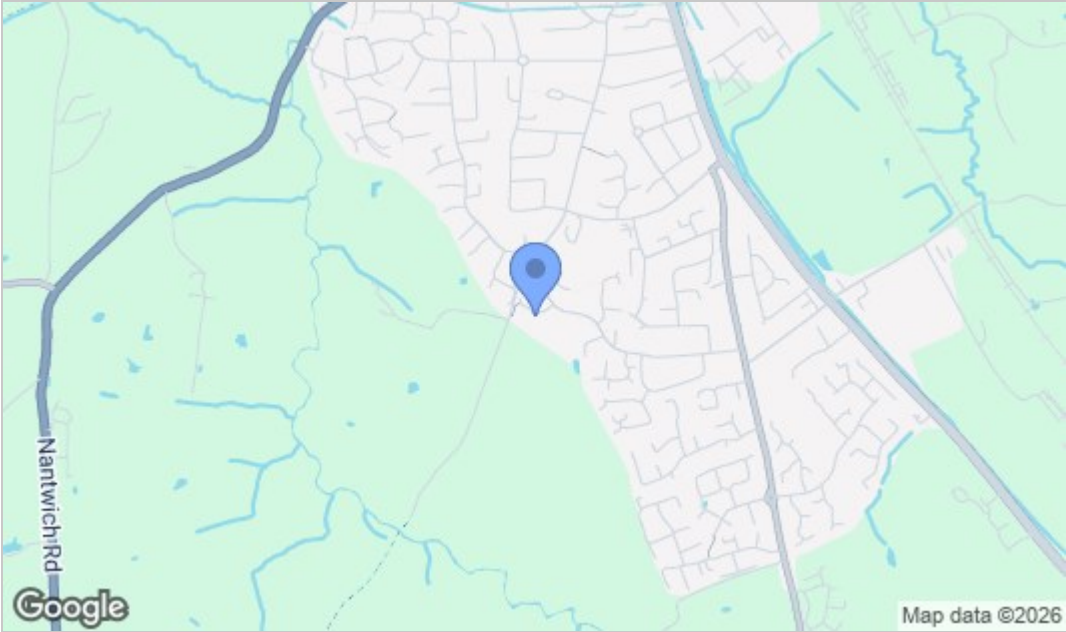
Floor Plan



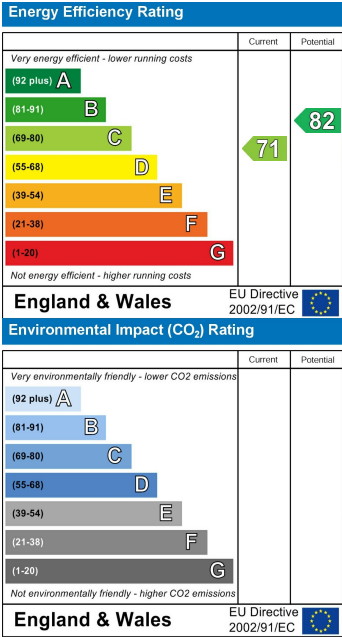
Total floor area 119.5 sq.m. (1,286 sq.ft.) approx

This floor plan is for illustrative purposes only. It is not drawn to scale. Any measurements, floor areas (including any total floor area), openings and orientation are approximate. No details are guaranteed, they cannot be relied upon for any purpose and they do not form part of any agreement. No liability is taken for any error, omission or misstatement. A party must rely upon its own inspection(s). Plan produced for Purple Bricks. Powered by www.focalagent.com

Area Map



Energy Efficiency Graph



NOTICE Chris Hamriding Lettings & Estate Agents for themselves and for the vendor or lessors of this property whose agents they are given notice that: (i) the particulars are set out as a general outline only for the guidance of intending purchasers or lessees, and do not constitute, nor constitute part of, an offer of contract, (ii), all descriptions, dimensions, references to condition and necessary permissions for use and occupation, and other details are given in good faith and are believed to be correct but any intending purchasers or tenants should not rely on them as statement or representation of fact but must satisfy themselves by inspection or otherwise as to the correctness of each of them, (iii) no person in the employment of Chris Hamriding Lettings & Estate Agents has any authority to make or give any representation or warranty whatever in relation to this property.